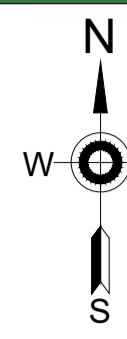
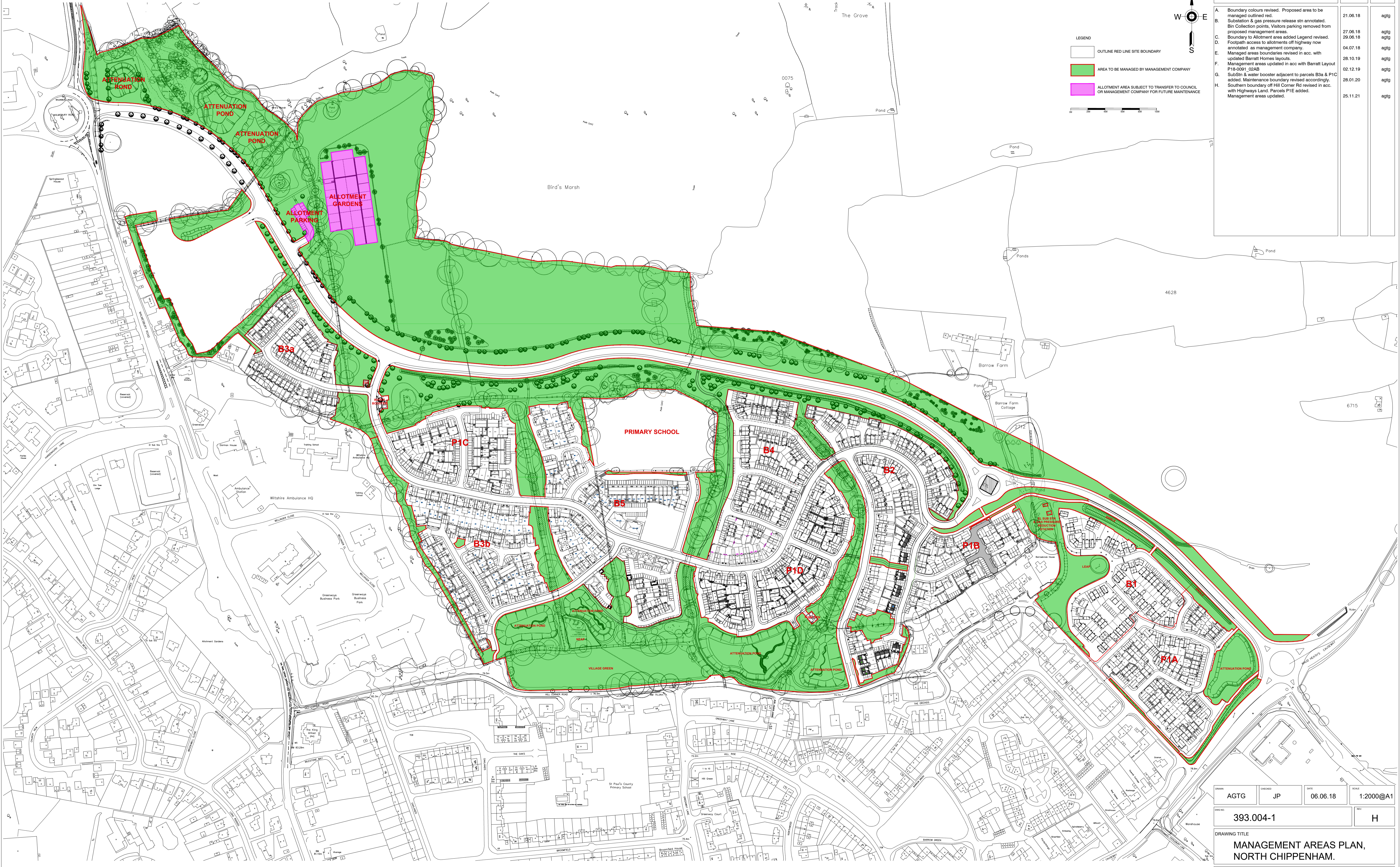


MANAGEMENT AREAS PLAN : NORTH CHIPPENHAM



LEGEND

- OUTLINE RED LINE SITE BOUNDARY
- AREA TO BE MANAGED BY MANAGEMENT COMPANY
- ALLOTMENT AREA SUBJECT TO TRANSFER TO COUNCIL OR MANAGEMENT COMPANY FOR FUTURE MAINTENANCE

REVISIONS	DATE	BY
A. Boundary colours revised. Proposed area to be managed outlined red.	21.06.18	agtg
B. Substation & gas pressure release stn annotated. Bin Collection points, Visitors parking removed from proposed management areas.	27.06.18	agtg
C. Boundary to Allotment area added Legend revised.	29.06.18	agtg
D. Footpath access to allotments off highway now annotated as management company.	04.07.18	agtg
E. Managed areas boundaries revised in acc. with updated Barratt Homes layouts.	28.10.19	agtg
F. Management areas updated in acc with Barratt Layout P18-0001_02AB	02.12.19	agtg
G. SubStn & water booster adjacent to parcels B5a & P1C added. Maintenance boundary revised accordingly.	28.01.20	agtg
H. Southern boundary off Hill Corner Rd revised in acc. with Highways Land. Parcels P1E added. Management areas updated.	25.11.21	agtg

DRAWN	AGTG	CHECKED	JP	DATE	06.06.18	SCALE	1:2000@A1
DWG NO.	393.004-1			REV	H		
DRAWING TITLE							
MANAGEMENT AREAS PLAN, NORTH CHIPPENHAM.							
<small>Persimmon Homes Wessex. All rights reserved. This drawing is the copyright of Persimmon Homes Developments Ltd and has been produced for planning purposes only. Such drawings can be scaled but are not to be used for construction or sales documents.</small>							